



LIGHT TRUCK/VAN

GITIVAN SERIES GITIUTILITY SERIES

GitiUtility 668V1

The GitiUtility 668V1 is a trusted choice for light truck drivers who need durability and long mileage. Built to perform on a wide range of road conditions, it offers dependable wear resistance and supports a smooth, efficient drive day after day.



RIM SIZE

ASPECT RATIO

SPEED RATING

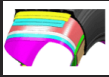


HIGH DURABILITY AND MILEAGE

TIRE FEATURES



DURABILITY AND MILEAGE



STRONG CASING

Applied high modulus and low shrink polyester ply strengthens tire casing. Delivers good carrying performance for longer service life

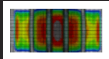


DOUBLE-LAYER HIGH-STRENGTH STEEL BELT AND HIGH-STRENGTH NYLON CAP PLY



STRONG BEAD DESIGN

Improved bead durability, delivering longer service life



FINITE ELEMENT ANALYSIS (FEA) CONSTRUCTED

FEA optimized and uniformly distributed contact pressure. Improves wear performance, especially against irregular wear



SHALLOW SIPE DESIGN

Improved road contact and water dispersion, leading to good wet grip

TIRE SPECIFICATIONS

SIZE	SPEED RATING	LOAD INDEX	EU TIRE LABEL		
			RR	Wet Grip	Noise Db